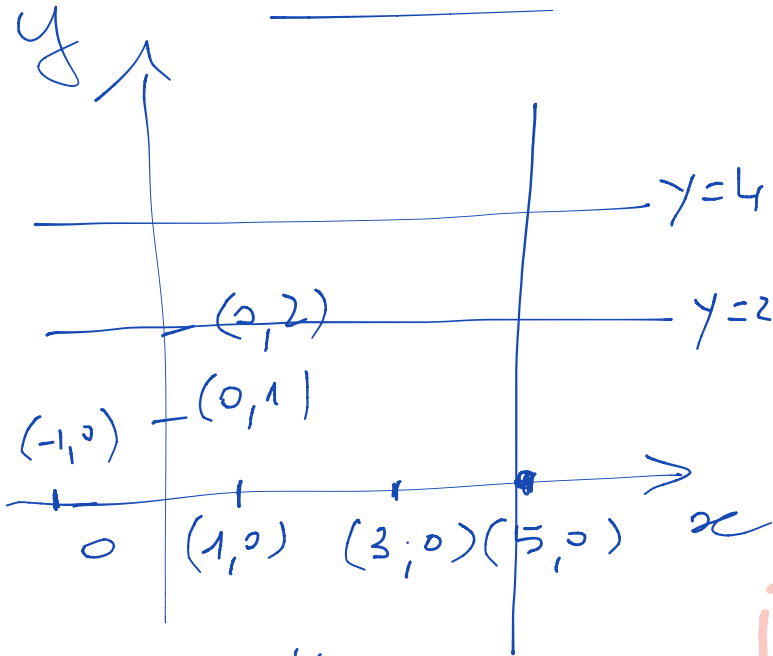


Retta



$$y = 0$$

$$x = 0$$

Retta // asse x :

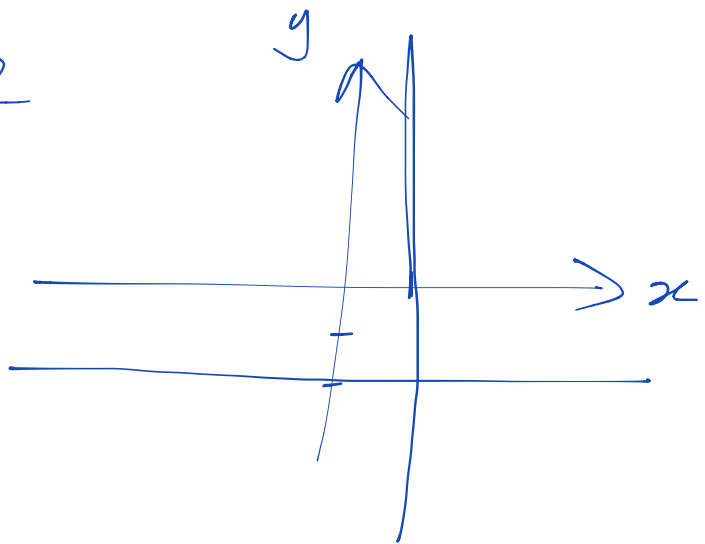
$$y = k$$

Retta // asse y :

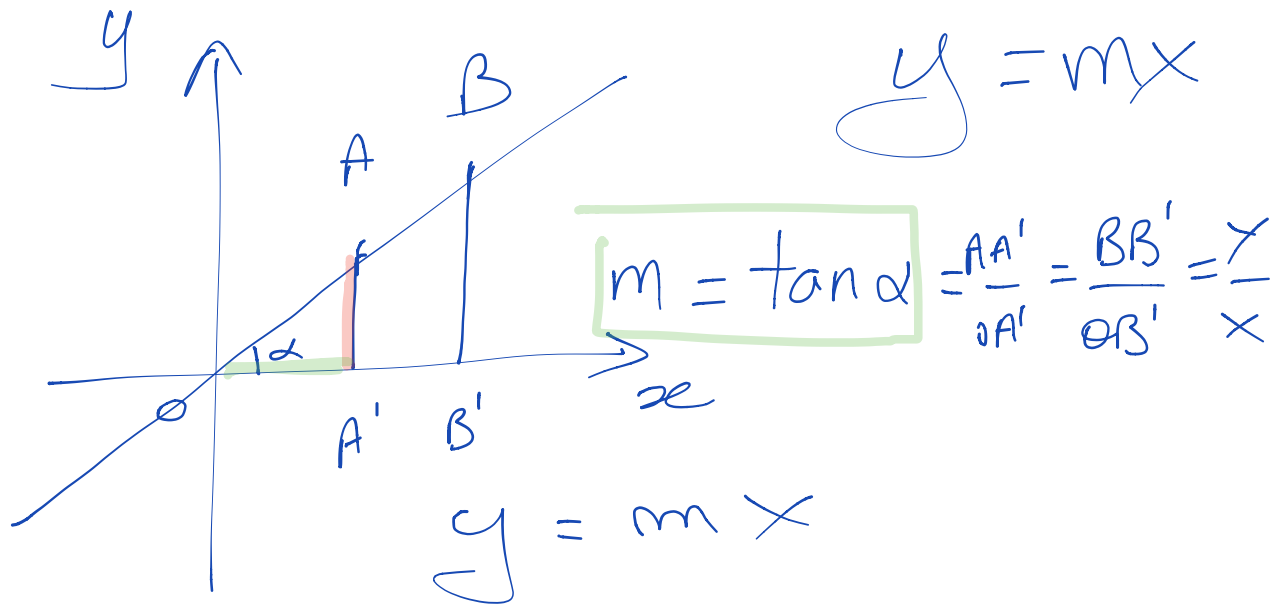
$$x = h$$

ES: $y = -2$

$$x = 1$$

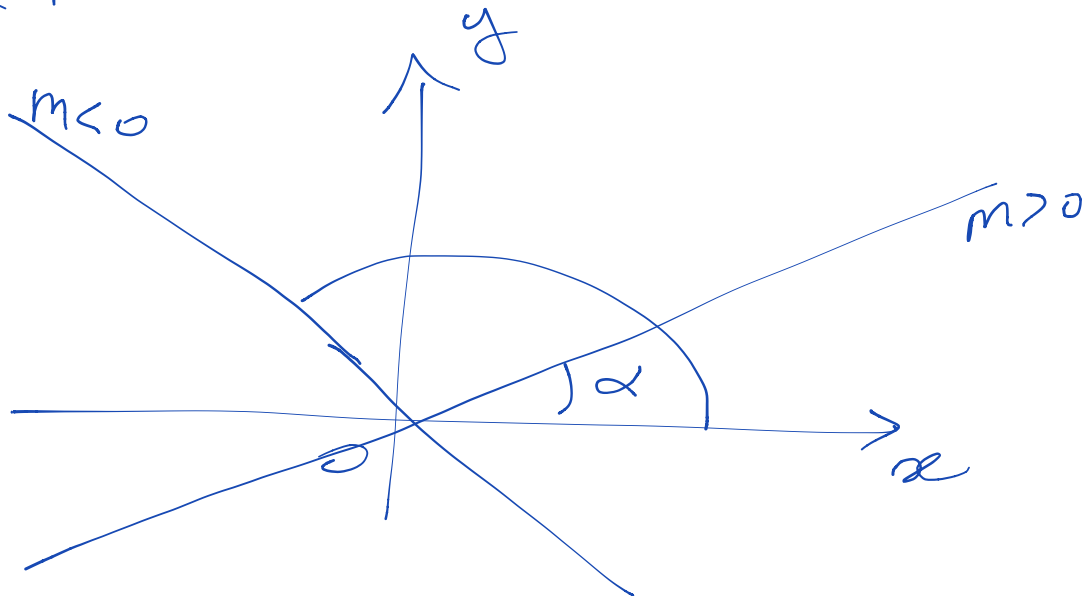


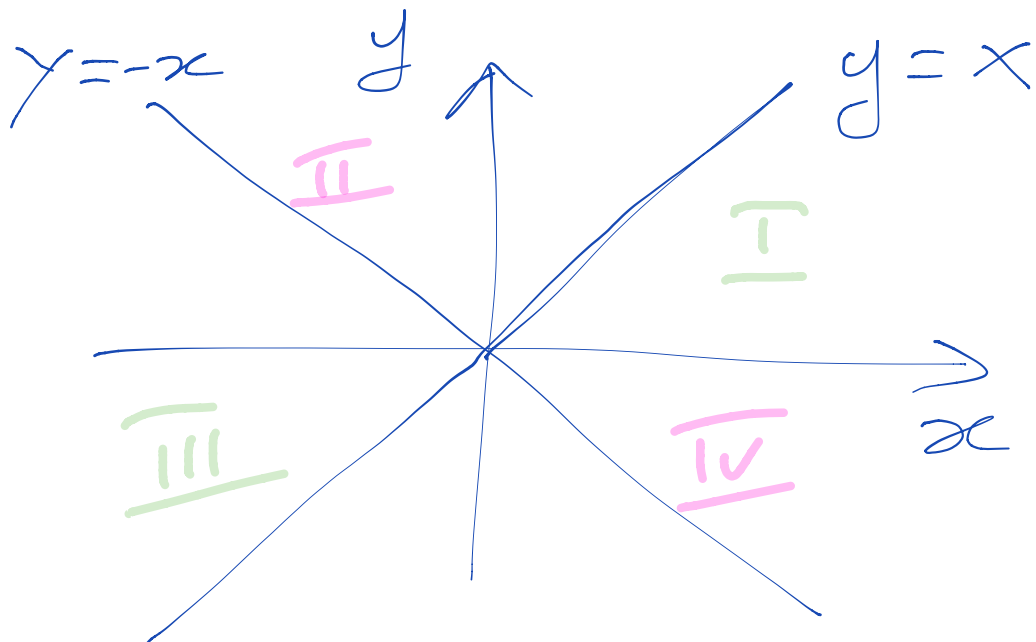
Retta per l'origine



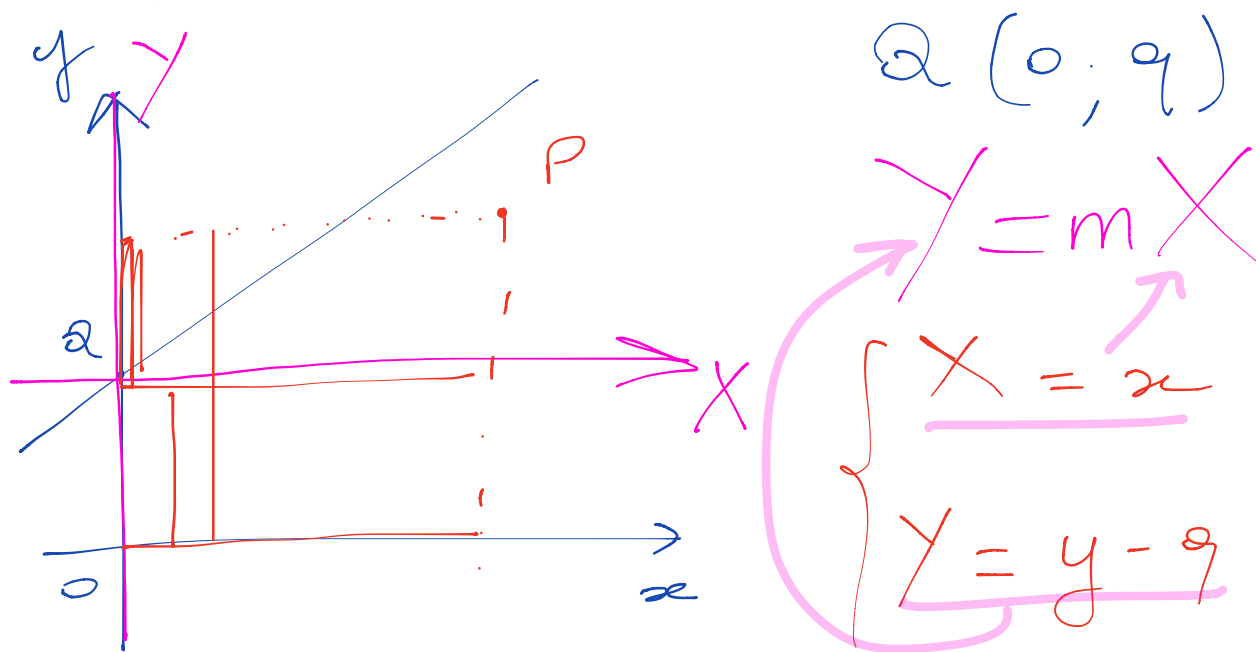
Se $m > 0 \Rightarrow \alpha$ è acuto

Se $m < 0 \Rightarrow \alpha$ è ottuso





Retta generica



$$y - q = mx \Rightarrow y = mx + q$$

$$y = 2x + 1 \quad \text{forma explícita}$$

$$7x - y + 9 = 0 \quad \text{f. implícita}$$

$$\text{ES: } 3x - 2y + 1 = 0$$

$$y = \frac{3x + 1}{2}$$

$$ax + by + c = 0$$

$$by = -ax - c$$

$$y = \underbrace{-\frac{a}{b}}_m x - \underbrace{\frac{c}{b}}_q$$

$$4x - 3y + 3 = 0$$

$$m = \frac{-4}{-3} = \frac{4}{3}$$

$$q = \frac{-3}{-3} = 1$$

$$y = \frac{4}{3}x + 1$$

Es. p. 752 n. 105

$$\underline{y} = -\frac{5}{6}x \rightarrow \frac{y}{x} = -\frac{5}{6}$$

$$A(\underline{-6}, \underline{5})$$

$$\underline{5 = -\frac{5}{6}(-6)}$$

$$5 = 5$$

$$B\left(\frac{6}{15}, -3\right)$$

$$-3 = -\frac{5}{6} \cdot \frac{6}{15}$$

$$-3 = -\frac{1}{3} \quad \underline{\text{falso}}$$

n. 136 $ax + by + c = 0$

$$\underline{(2-3a)x} + \underline{ay} + \underline{3-a} = 0$$

a) $a = 0$

b) $2-3a = 0 \Rightarrow a = \frac{2}{3}$

c) $3-a = 0 \Rightarrow a = 3$

$$d) \quad y = -2$$

$$\underline{a = \frac{2}{3}}$$

$$ay + 3 - a = 0$$

$$y = \frac{a-3}{a}$$

$$\frac{a-3}{a} = -2 \quad ; \quad \frac{a-3}{a} + 2 = 0$$

$$\frac{a-3+2a}{\cancel{a}} = 0 \quad a \neq 0$$

$$3a = 3 \quad \Rightarrow \quad \underline{a = 1}$$